



@Animal_Feeding

www.animalfeeding.org



W
wellcome

Animal feeding in the time of a pandemic

Care and feeding of pets in an pandemic

info@animalfeeding.org



Alex Mullan
Ethnographic study of human-animal
feeding practices at Edinburgh Zoo
mullana@roehampton.ac.uk





Feeding zoo
animals during
crisis events.

- Compassion
- Contributions
- Collective action



THE PENGUINS TAKE THEIR DAILY WALK



Pets and pests during COVID-19



- Cat feeding as part of the tourist economy in Rome
- Shifting health paradigms in pet rescue homes
- An ethnography of voluntary work during emergency times?



Understanding historic raptor diets and feeding relationships

Juliette Caverly

Supervisors: Dr Stuart Black (Reading), Prof Mark Fellowes (Reading), Prof Naomi Sykes (Exeter)

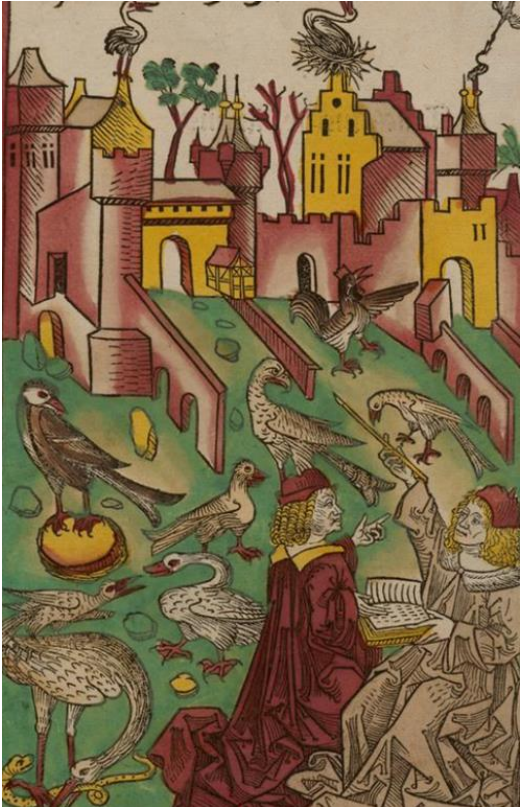


Project aim: to contribute to an understanding of human-animal feeding in the past by exploring raptor diets using stable isotope analysis along with historical sources and skeletal biomarkers

Study species (proposed)

- ❖ Red kite (*Milvus milvus*)
- ❖ White tailed eagle (*Haliaeetus albicilla*)
- ❖ Northern goshawk (*Accipiter gentilis*)

Kites perched on men in a street scene from the *Hortus sanitatus*, 1491



*“When the Kite builds,
look to lesser Linen.”*

Shakespeare, The Winter's Tale, Act 4, Scene 3

Stuffed red kite from 1912 (extinct in England and Scotland), Reading Museum



Objectives

- ❖ To determine how indirect/direct provisioning of human foods to raptors can be identified using stable isotopic analyses
- ❖ To explore how alternative avenues of skeletal investigation (pathologies, biometrics) and historical documentation can complement isotopic data
- ❖ To examine how these dietary insights reflect past and present human relationships with raptors in settlement areas
- ❖ To understand how raptor diets in the past can inform our understanding of the spaces occupied by birds in rewilding efforts today

Herre de Bondt

PhD Student Anthropology, University of Roehampton

